



### SLIM FIT

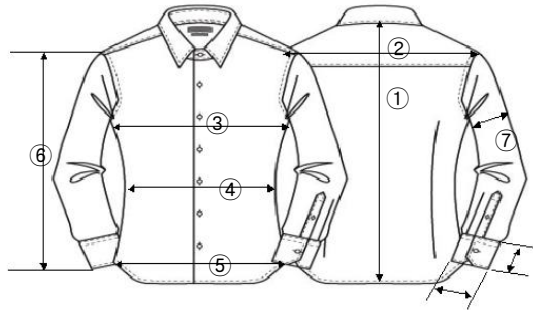
SIZE	37	38	39	40	41	42	43	44	45	46
① BACK LENGTH	74	74	75	75	76	76	77	77	79	79
② SHOULDER WIDTH	43	43	45	45	47	47	49	49	51	51
③ CHEST ROUND	104	104	110	110	116	116	123	123	129	129
④ WAIST ROUND	90	90	96	96	102	102	107	107	112	112
⑤ BOTTOM ROUND	102	102	108	108	114	114	120	120	126	126
⑥ SLEEVE LENGTH	64	64	65	65	65	65	66,5	66,5	66,5	66,5
⑦ UPPER ARM	14	14	16	16	18	18	20	20	22	22
⑧ NECK ROUND	37	38	39	40	41	42	43	44	45	46

### REGULAR FIT

SIZE	37	38	39	40	41	42	43	44	45	46
① BACK LENGTH	74	74	75	75	76	76	77	77	79	79
② SHOULDER WIDTH	43	43	45	45	47	47	49	49	51	51
③ CHEST ROUND	107	107	115	115	122	122	127	127	133	133
④ WAIST ROUND	97	97	103	103	109	109	114	114	120	120
⑤ BOTTOM ROUND	105	105	113	113	120	120	125	125	131	131
⑥ SLEEVE LENGTH	64	64	65	65	65	65	66,5	66,5	66,5	66,5
⑦ UPPER ARM	15,5	15,5	17,5	17,5	19,5	19,5	21,5	21,5	23,5	23,5
⑧ NECK ROUND	37	38	39	40	41	42	43	44	45	46

LE MISURE NEI CAPI LAVATI POSSONO SUBIRE DELLE VARIAZIONI NELL'ORDINE DEL 5% IN PIU' O IN MENO

MEASURES IN THE WASHING CLOTHES MAY CHANGE WITHIN A TOLLERANCE OF 5% MORE OR LESS



cuffs are 7cm high for all the sizes. The lenght of the cuffs change as below:

cuff size (open) from edge to edge	37	38	39	40	41	42	43
	21	21	22	22	23	23	24

